



Vineyard heroes



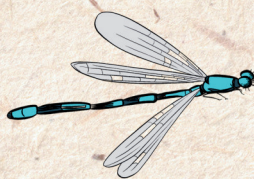
parasitic wasps

parasitise light brown apple moth (LBAM), vine moth, grapevine scale, and mealybugs



ladybird beetles

eat soft bodied insects and egg masses



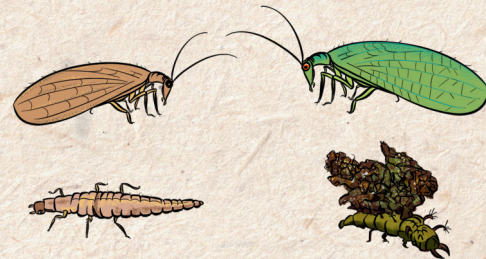
damself flies

eat flying insects including LBAM and vine moths



jumping spiders

consume a wide range of prey, including insects twice their own size



brown and green lacewing larvae

feed on soft-bodied insects such as thrips, scales, mites, mealybugs, moth eggs and small caterpillars (adults feed on nectar and pollen)



praying mantids

hunt beetles, moths, grasshoppers and other pest species



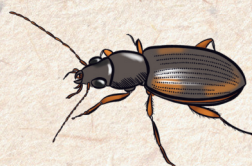
spiders

eat a broad range of vineyard insects and mites



shield bugs

feed on a variety of soft-bodied insects



ground beetles

consume slugs, cut worms, caterpillars and insect eggs



pirate bugs

feed on small insects, larvae and eggs of aphids, mites, moth eggs, and small caterpillars



hoverfly

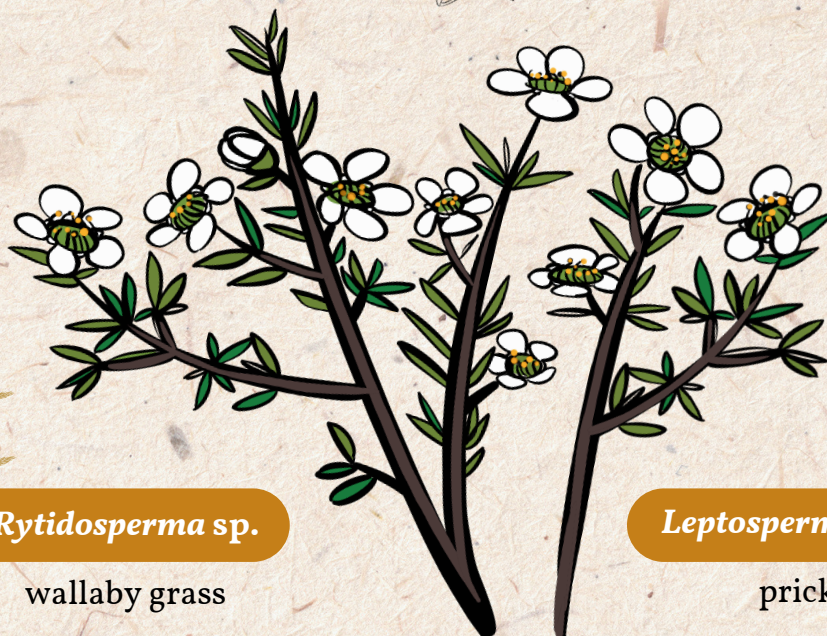
larvae feed on soft-bodied insects (mealybugs and moth larvae) and their eggs (adults feed on nectar and pollen)

Plant a diversity of native insectary plants to attract predatory arthropods which provide biocontrol of insect pests



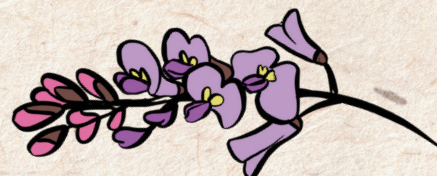
Bursaria spinosa

sweet bursaria



Rytidosperma sp.

wallaby grass



Hardenbergia violacea

native lilac



Vittadinia sp.

New Holland daisy

Leptospermum continentale

prickly tea-tree

© Retallack Viticulture Pty Ltd

