

McLaren Vale Wine Region

Case Study, July 2021

The Wetlands Vineyard, McLaren Vale, SA

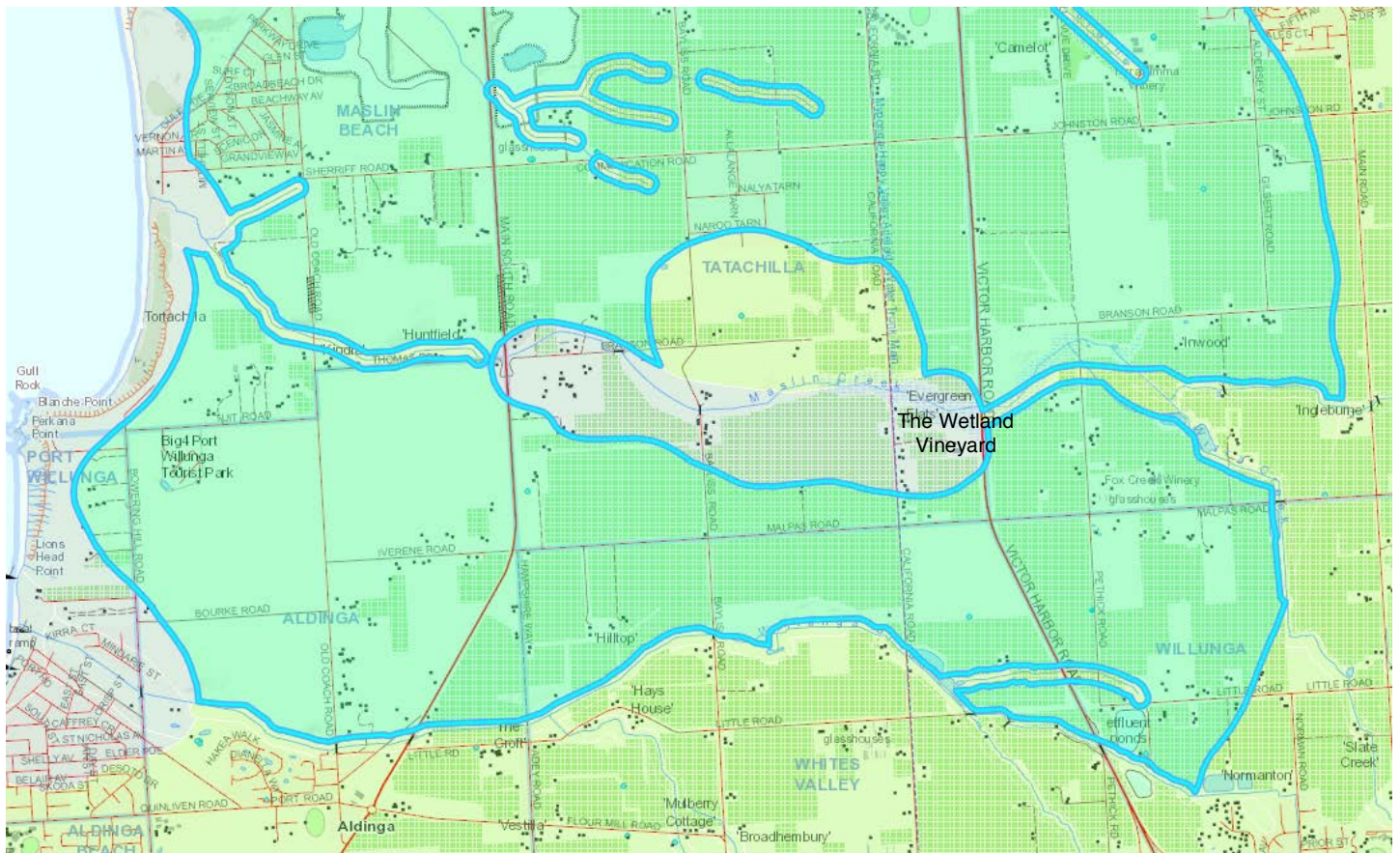
EcoGrower: Sami Gilligan

“As landowners it is very rewarding and gratifying knowing that we are doing something to increase the biodiversity on our property.”



McLaren Vale Wine Region

Plant community: *Leptospermum lanigerum* tall shrubland and Mallee box, *Eucalyptus porosa*, drooping sheoak, *Allocasuarina verticillata*, dryland tea-tree, *Melaleuca lanceolata* low woodland (marked in blue)





Case study

Progress (June 2019 to 2021):

We de-silted a waterhole on our property. We are hoping to achieve a water source that micro bats can easily access water from and to provide a suitable habitat for microbats to flourish on our property.

What did you do and when?

We used an excavator to dig out the water hole in February 2020, then planted a variety of native plants June 2020.

Any highlights/insights that you would like to share?

We have observed microbats in the area (through the use of an echolocation sensing device).

Where to from here (future plans)?

Weed control is what we will concentrate on now.

What worked well?

We are very happy with the earthworks and plantings carried out.

Pitfalls to avoid?

Weed control is the biggest challenge.

Native plant list:

- *Acacia acinacea*, gold dust wattle
- *Atriplex semibaccata*, creeping saltbush
- *Bursaria spinosa*, Christmas bush
- *Calocephalus citreus*, lemon beauty heads
- *Carex teritcaulis*, common sedge
- *Cyperus gymnocaulis*, spiny flat sedge
- *Cyperus vaginatus*, stiff flat sedge
- *Dianella revoluta*, black anther flax lily
- *Dodonea viscosa*, sticky hop bush
- *Einadia nutans*, climbing saltbush
- *Enchyleana tomentosa*, ruby saltbush
- *Eutaxia microphylla*, mallee bush pea
- *Ficinia nodosa*, knobby club rush
- *Gahnia filum*, cutting grass
- *Goodenia ovata*, hop goodenia
- *Hardenbergia violacea*, native lilac
- *Kennedia prostrata*, running postman
- *Juncus subsecundus*, common rush
- *Leptospermum continentale*, prickly tea-tree
- *Leptospermum lanigerum*, woolly tea tree
- *Lomandra multiflora* ssp. *dura*, hard mat *rush*
- *Melaleuca lanceolata*, dryland tea tree
- *Melaleuca decussata*, totem poles
- *Olearia ramulosa*, twiggy daisy bush
- *Rytidosperma caespitosa*, wallaby grass
- *Poa labillardieri*, common tussock grass
- *Scaevola albida*, pale fan flower
- *Vittadinia blackii*, New Holland daisy
- *Xanthorrhoea semiplana*, yacca



Photo above: Sami Gilligan using an Ocloc photo-point (Photo: Mary Retallack).

Photos left: Wine Australia sponsored educational sign and Sami inspecting the newly planted native insectary plants adjacent to the water hole (Photo: Mary Retallack).



June 2020 (Photo: Sami Gilligan)



June 2020 (Photo: Sami Gilligan)



Before: 5 May 2020 (Photo: Sami Gilligan)

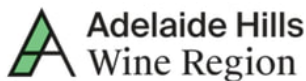


After: 24 June 2020 (Photo: Mary Retallack)

Expenses (cash and in-kind)

Name: The Wetlands Vineyard		Region: McLaren Vale			
Date	Activity	Number of plants	Grant cash expenses	Additional cash co-contribution	In-kind time captured
03/03/2020	Southcoast Earthworks - cleaning and desilting wetlands		\$1,500	\$ 1,866	
29/04/2020	Goolwa Wetlands LAP (500 plants)	500	\$ 960	\$ 294	
04/08/2020	Arbogreen Landscape Products (700 stakes, 700 corflute guards)		\$1,540		
26/06/2020	Labour - planting (8 people x 6 hrs per person)			\$ 1,440	48 hrs
TOTAL		500	\$4,000	\$ 3,600	48 hrs

Thank you to our project partners!



This project is supported by the Hills and Fleurieu Landscape Board's Grassroots Grants Program and is funded by the landscape levy.

Acknowledgement of country

The EcoVineyards project acknowledges Aboriginal people as the First Peoples and Nations of the lands and waters we live and work upon and we pay our respects to their Elders past, present and emerging. We acknowledge and respect the deep spiritual connection and the relationship that Aboriginal and Torres Strait Islander people have to Country.

The Kaurna people are the traditional custodians of the McLaren vale region and have an ongoing connection to the land.

Disclaimer

Wine Grape Council of South Australia and Retallack Viticulture Pty Ltd do not warrant or make any representation regarding the use or results of use of the information contained herein as to its correctness, accuracy, currency, or otherwise. No person should act on the basis of the contents of this publication without first obtaining, specific, independent professional advice relevant to a particular site. Wine Grape Council of South Australia and Retallack Viticulture Pty Ltd will not be liable for any loss, damage, cost or expense incurred or arising by reason of any person using or relying on the information in this publication.

For more info about the EcoVineyards project see <https://www.wgcsa.com.au/ecovineyards.html>